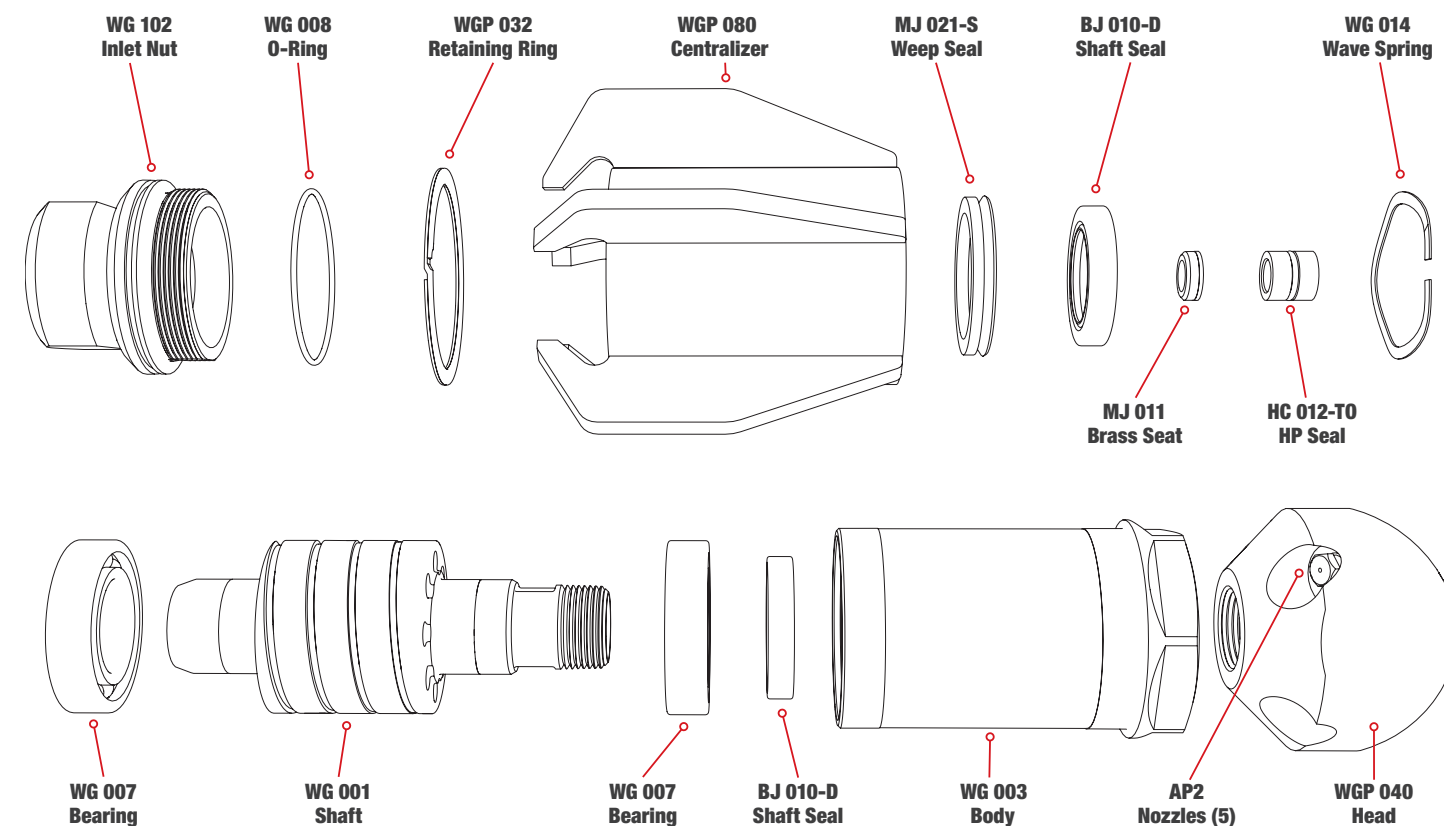


WGP-1 CLASSIC

EXPLODED VIEW - PART NAMES AND NUMBERS



WGP-1 PULLER

The Warthog WGP-1 is designed to produce up to 40% more pulling power than the WG-1, with the front jet plugged. The rear facing jets are angled more sharply and the centralizer fins have been streamlined. The result is more pulling power to navigate longer lines and moderate inclines, plus makes retrieval of the tool easier.

WGP-1 PULLER

Up to 5k psi (350 bar)
50-80 gpm Flows (190-300 l/min)
Up to 40% More Pulling Power*

8-36" Lines (203-914 mm)

FEATURES:

- **Controlled rotation** — Slower dwell time allows jets to penetrate deeper through deposits
- **Multiple head options** — Customize tool for unplugging, descaling or manhole cleaning
- **Highest quality jets** — Hardened stainless steel orifices resist cracking and scratching
- **Optional descaling head available**

WGP-1 Specifications

MAXIMUM PRESSURE	5k psi	350 bar
OPERATING PRESSURE	1500-5k psi	100-350 bar
ROTATION SPEED	150-300 rpm	
FLOW	50-80 gpm	190-300 l/min
FLOW RATING	4.6 Cv	
PULLING FORCE	100-140 lb	450-623 N
INLET CONNECTION	1 NPT or BSPP	
LENGTH	9.1 in.	231 mm
DIAMETER WITH CENT.	4.8 in.	122 mm
PORTS	5 x 1/8 NPT	
WEIGHT	10.9 lb	4.9 kg

* With the front jet plugged.

Maintenance & Overhaul Kits

WG 600 • SERVICE KIT

- (1) BJ 048-F.....Visc. Fluid, 6oz.
- (1) BJ 062-S.....Antiseize, 2g
- (1) GP 025-P2.....Hex Socket Plug
- (1) MJ 011.....Brass Seat
- (1) HC 012-TO.....HP Seal & O-Ring

WG 610 • OVERHAUL KIT

- (2) BJ 010-D.....Shaft Seals
- (1) BJ 048-F.....Visc. Fluid, 6oz.
- (1) BJ 062-S.....Antiseize, 2g
- (1) MJ 011.....Brass Seat
- (1) HC 012-TO.....HP Seal & O-Ring
- (2) WG 007.....Ball Bearings
- (1) WG 008.....O-Ring
- (1) WG 014.....Wave Spring
- (1) MJ 021-S.....Weep Seal
- (1) WGP 032.....Retaining Ring

WG 612 • TOOL KIT

- (1) HC 064.....Fill Tube
- (1) BJ 105.....Tool

WG 602 • SEAL KIT

- (1) MJ 011.....Brass Seat
- (1) HC 012-TO.....HP Seal & O-Ring